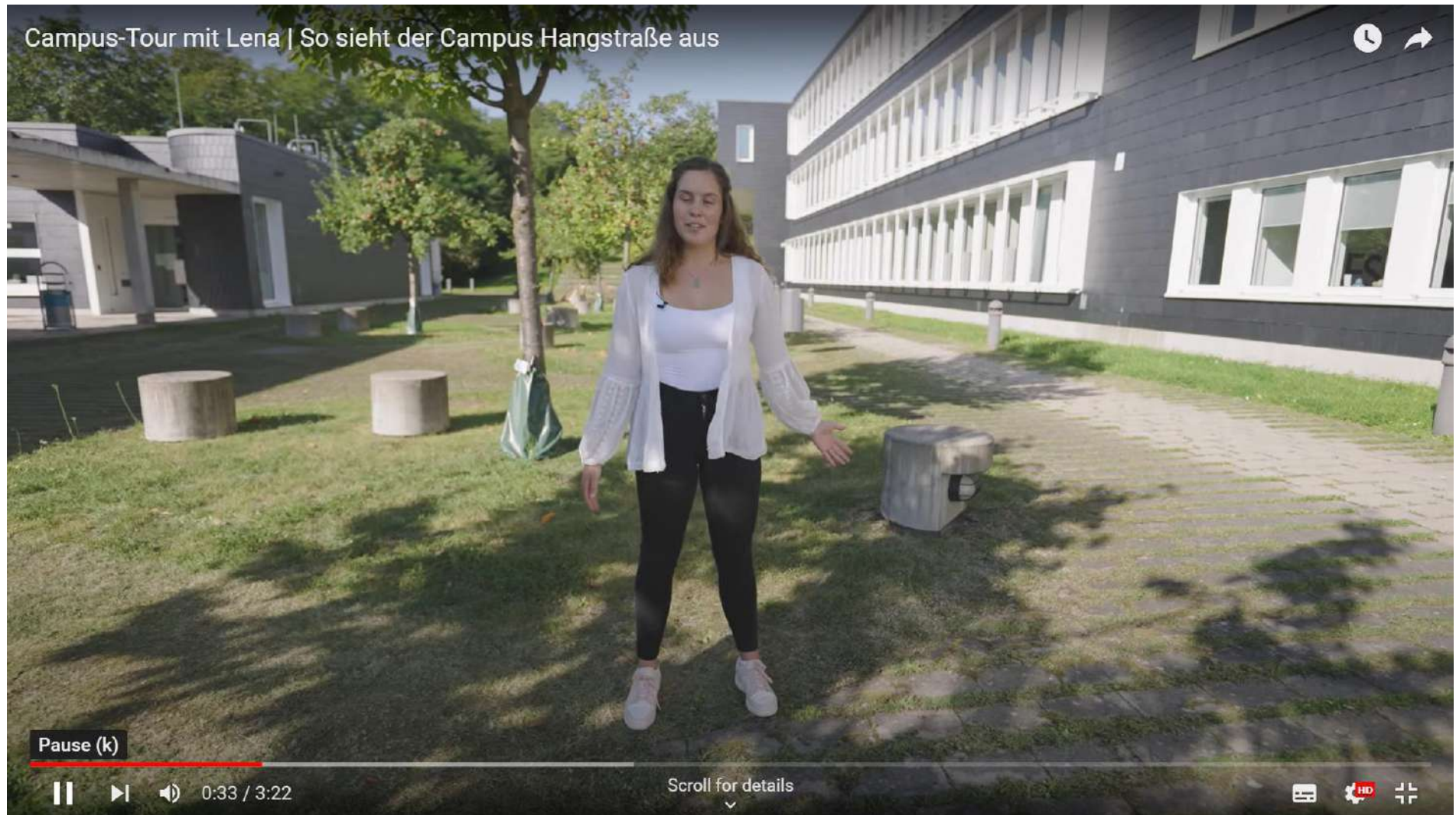


# Cooperative Education at DHBW

**Prof. Dr. Valentin Weislämle**  
**Prof. Dr. Wendy Fehlner**

*Coopera Workshop | 24. September 2021*



# 1. The World of Work – Region Baden-Wuerttemberg

---

## Baden-Wuerttemberg – a Prospering Federal State in Germany and a Perfect Location in the Heart of Europe

- Baden-Wuerttemberg – a central gateway to Europe
- 80% of all European capital cities can be reached within two hours
- Economic power house: GDP of almost € 400 bn is higher than that of many European nations
- 4,8% of GDP is invested into research & development (more than any other federal state in Germany)
- Engineering is the traditional strength: Half the machines produced in Germany come from Baden-Wuerttemberg



## BADEN-WUERTTEMBERG – Home to Many Global Players

**STIHL**<sup>®</sup>



**BOSCH**

**FESTO**

**DAIMLER**

**HEIDELBERG**

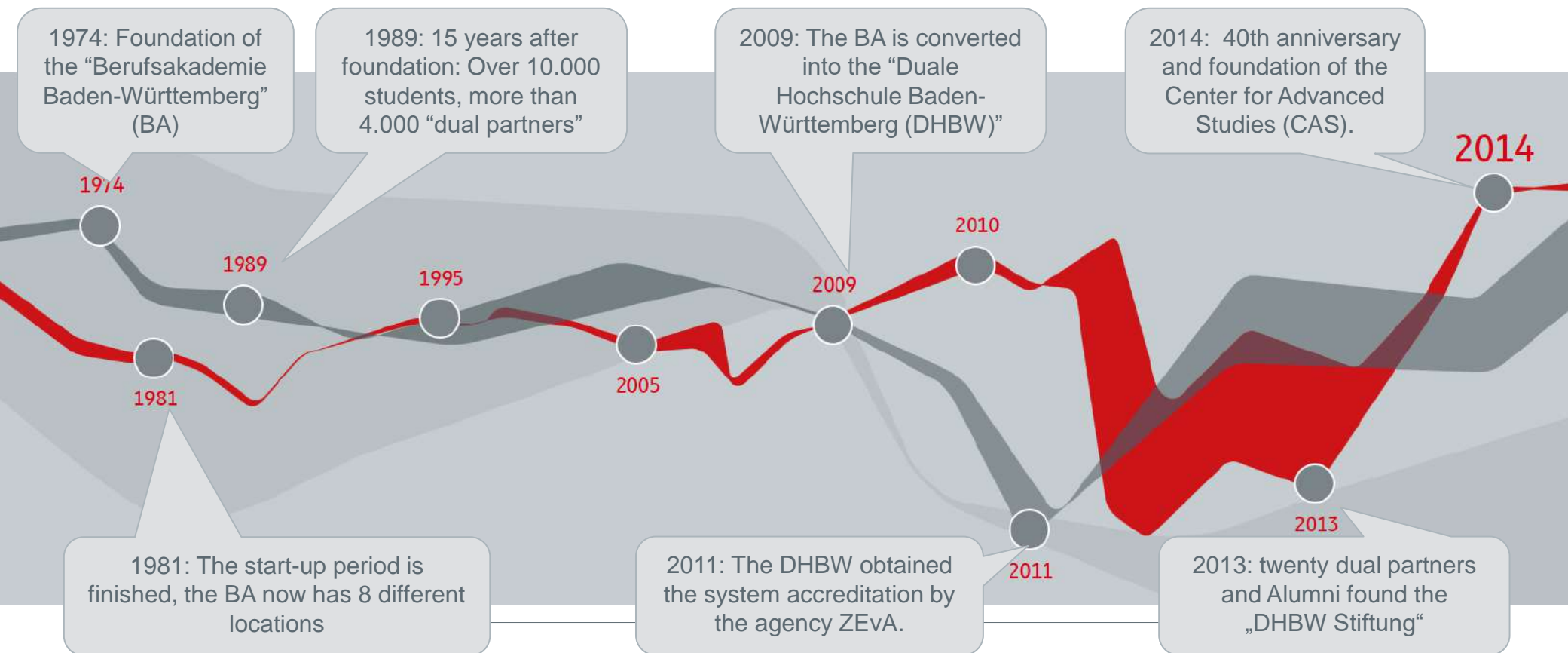


## 2. DHBW –

# History, Facts and Figures

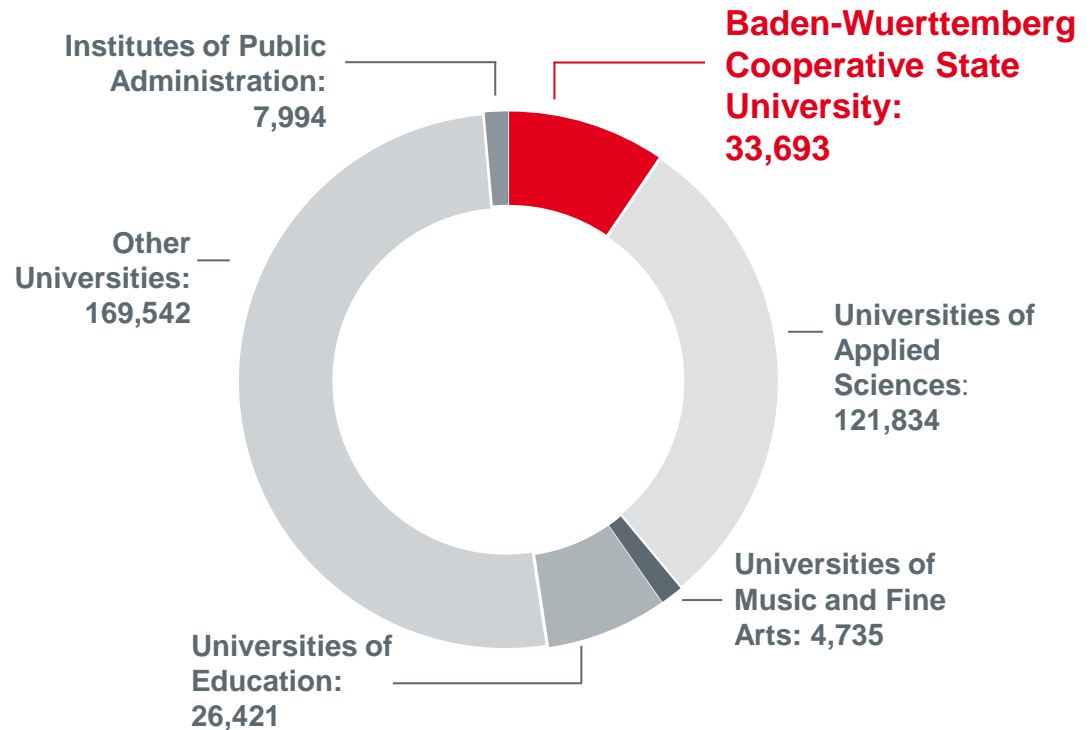
---

# A SHORT OVERVIEW ON THE HISTORY OF THE BADEN WUERTTEMBERG COOPERATIVE UNIVERSITY



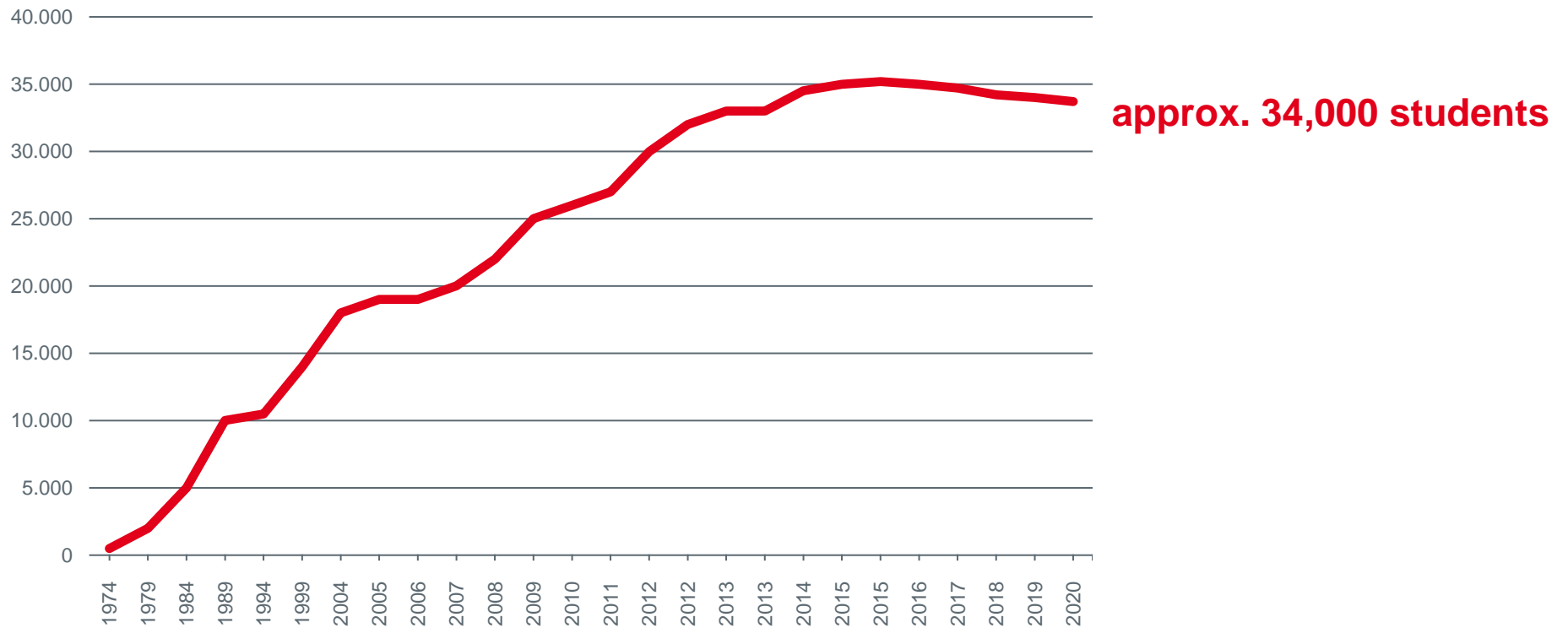
# HIGHER EDUCATION INSTITUTIONS & ENROLLED STUDENTS WINTER TERM 2020/2021 BADEN-WUERTTEMBERG

Overall 364,000 enrolled students (Baden-Wuerttemberg, winter term 2020/2021)



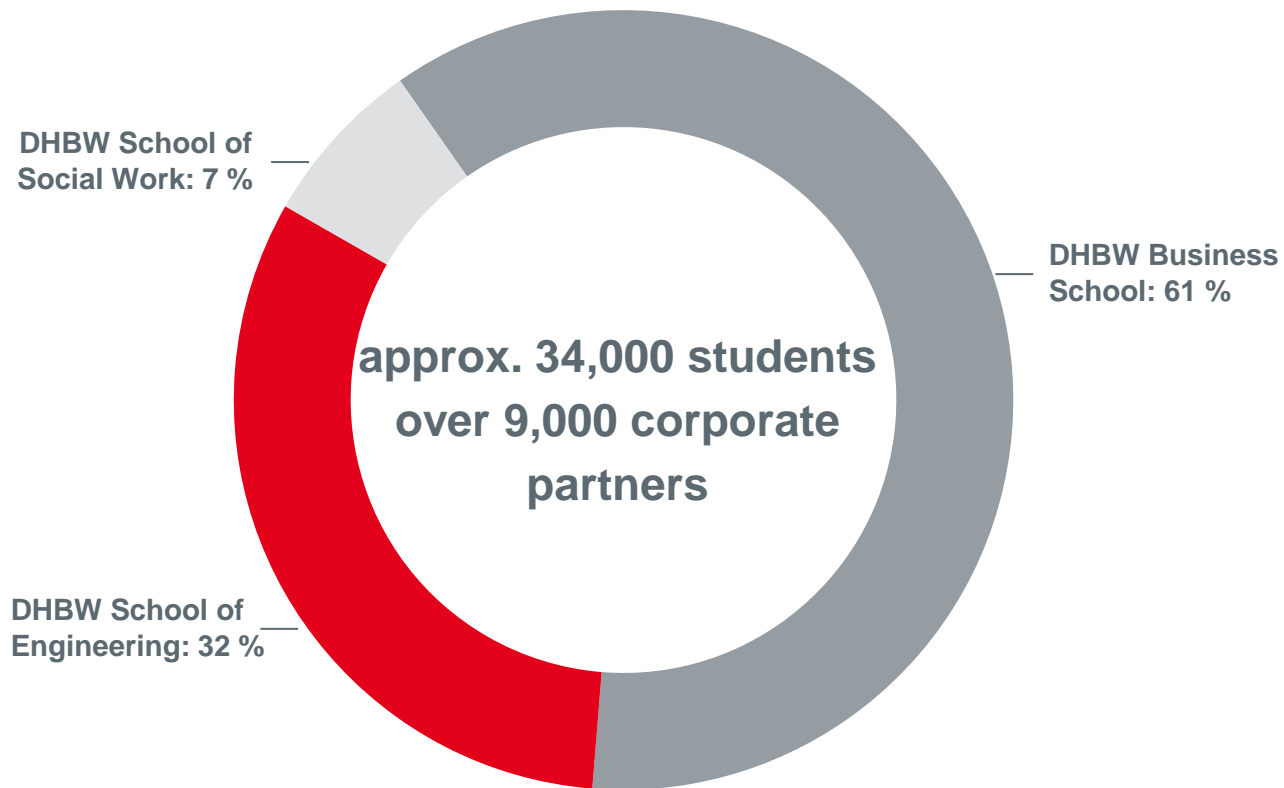


# Students Enrolled at DHBW 1974 – 2020



## Allocation of Students:

**DHBW School of Engineering,  
DHBW Business School &  
DHBW School of Social Work**

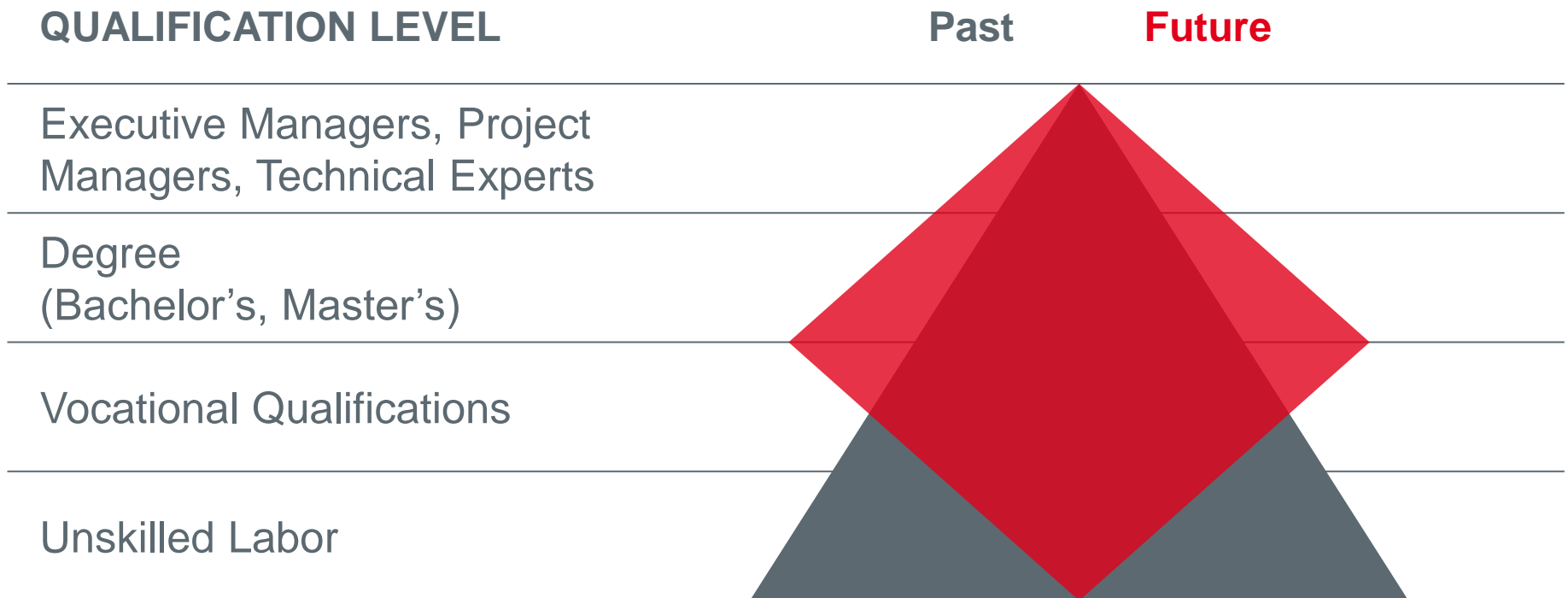


## 3. DHBW – Profile

**A systems' challenge!**

---

# The Shift of Qualification Demand within the Economy:



\*Source: Prof. Matthias Landmesser. *Challenges of the Academic Further Education from the Corporate Perspective*. KIT, March 2013.

# Cooperative Higher Education: Academic Learning + Workplace Training

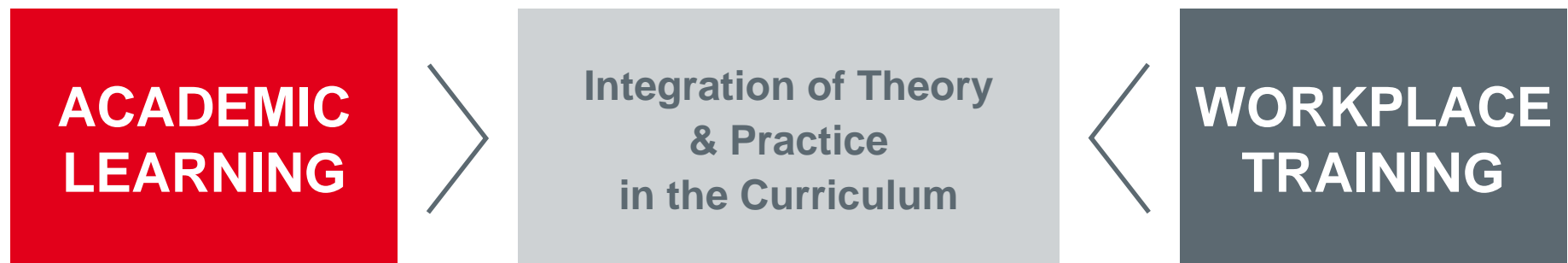
## THEORETICAL KNOWLEDGE

Intensive 3-month phases of academic learning at one of the 12 DHBW locations and campuses



## PRACTICAL EXPERIENCE

3-month work placements at one of over 9,000 partner companies and social institutions ('corporate partners')



# Cooperative Higher Education: Theory and Practice Integrated

## THEORETICAL KNOWLEDGE

- At DHBW - academic knowledge is conveyed by more than **700 full-time professors** and **9,000 associate lecturers**.
- This guarantees that the students are provided **applied** and **up-to-date knowledge** from the chosen professional field.



## PRACTICAL EXPERIENCE

- Work placement at one of over **9,000 partner companies and social institutions** enables the students to reality-test their careers.
- As a result, co-op students have a clearer sense of their career objectives than the students from academic universities.

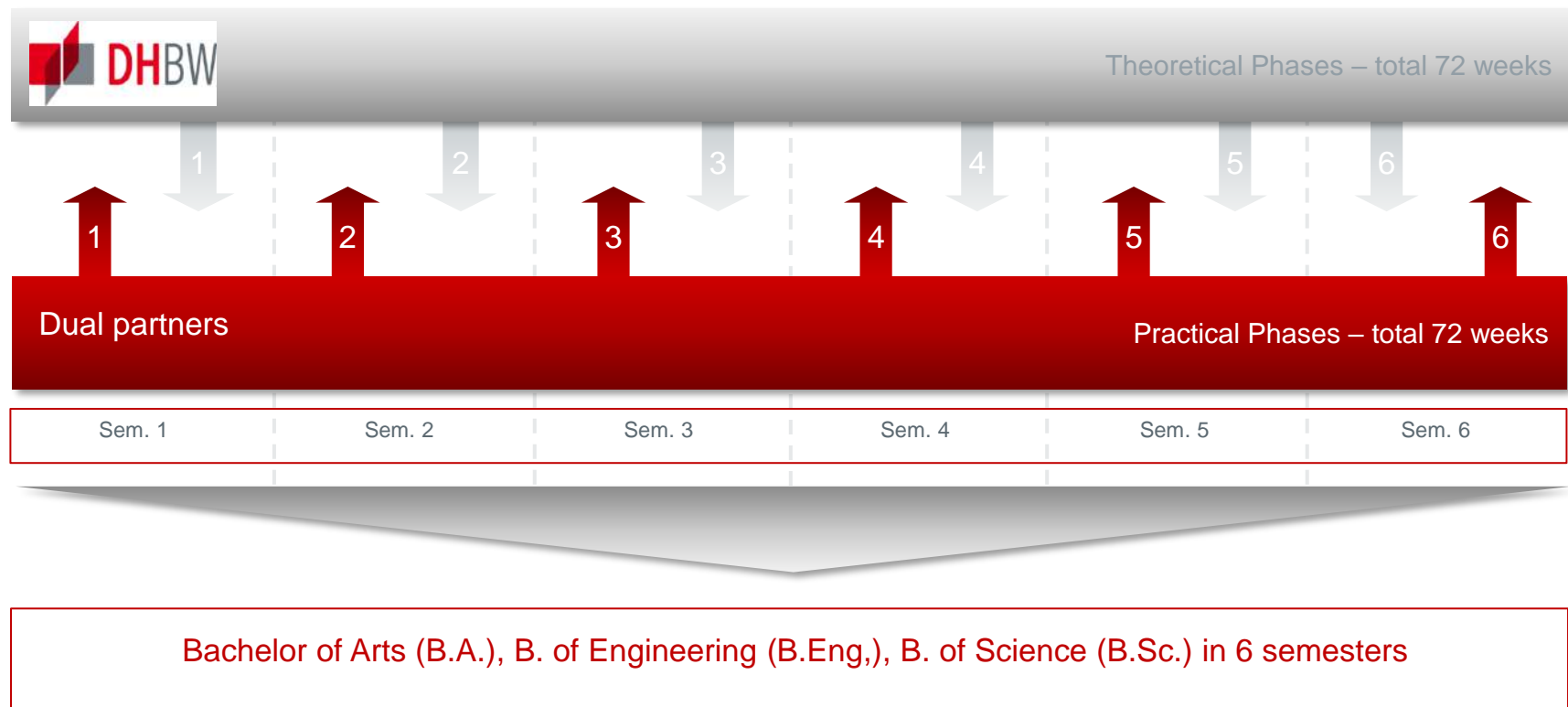


## The DHBW Model Links Practice and Theory



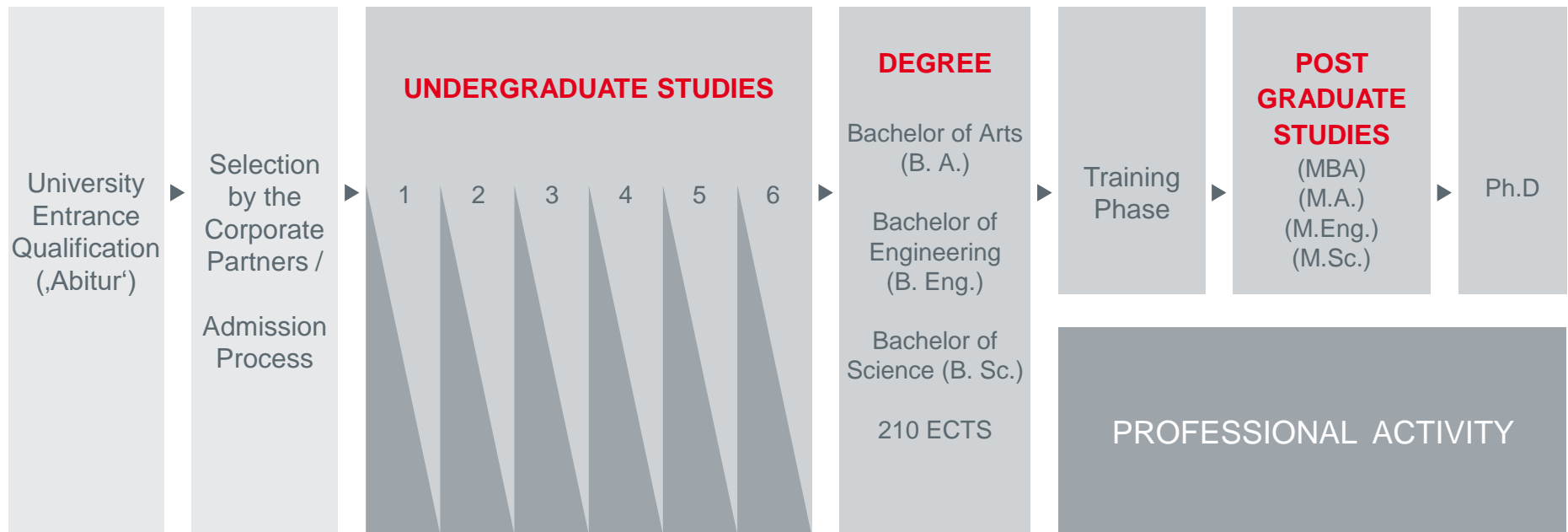
**Decisions and Regulations:**  
By law partners are **part** of the DHBW State University  
Partners are equally represented in all committees

# The Synergy of Theory and Practice: DHBW integrates academic studies with workplace training





# DHBW: Organization of the Study Process



# 4. DHBW – Organisation

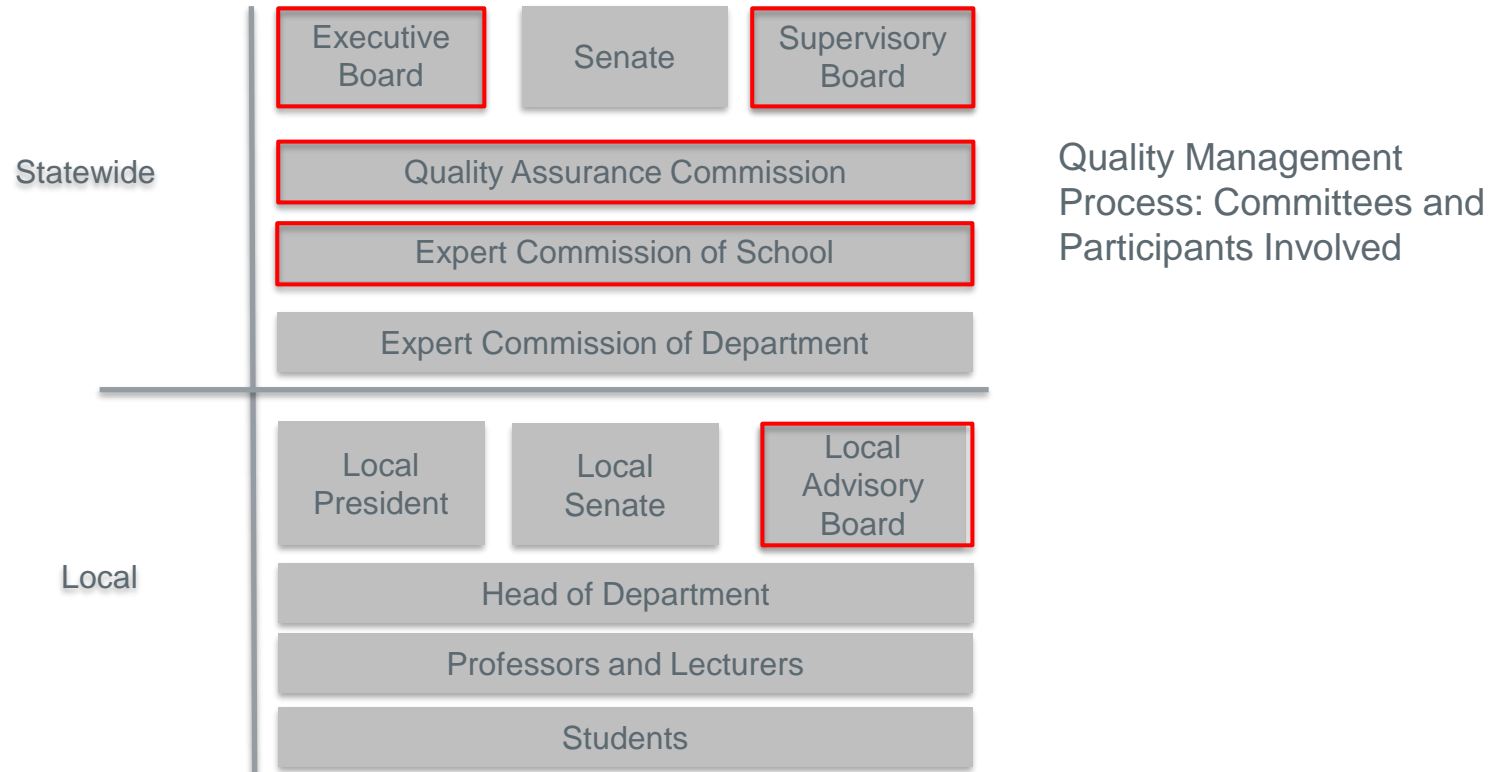
**A strategic collaboration**

---

## **DHBW: Based on the US State University System**

- Founded on **March 1, 2009**, the Baden-Wuerttemberg Cooperative State University traces its roots back to the University of Cooperative Education (*Berufsakademie Baden-Wuerttemberg*).
- Today the university continues to carry on the acknowledged and highly successful model of **cooperative ‘dual’ education**.
- Based on the US State University System, the organization structure of DHBW is unique in Germany, comprising both the central and the local levels:
  - » **Central level:** DHBW headquarters ‘Präsidium’
  - » **Local level:** 9 DHBW locations and 3 DHBW campuses

## Organizational structure of DHBW as a State-University

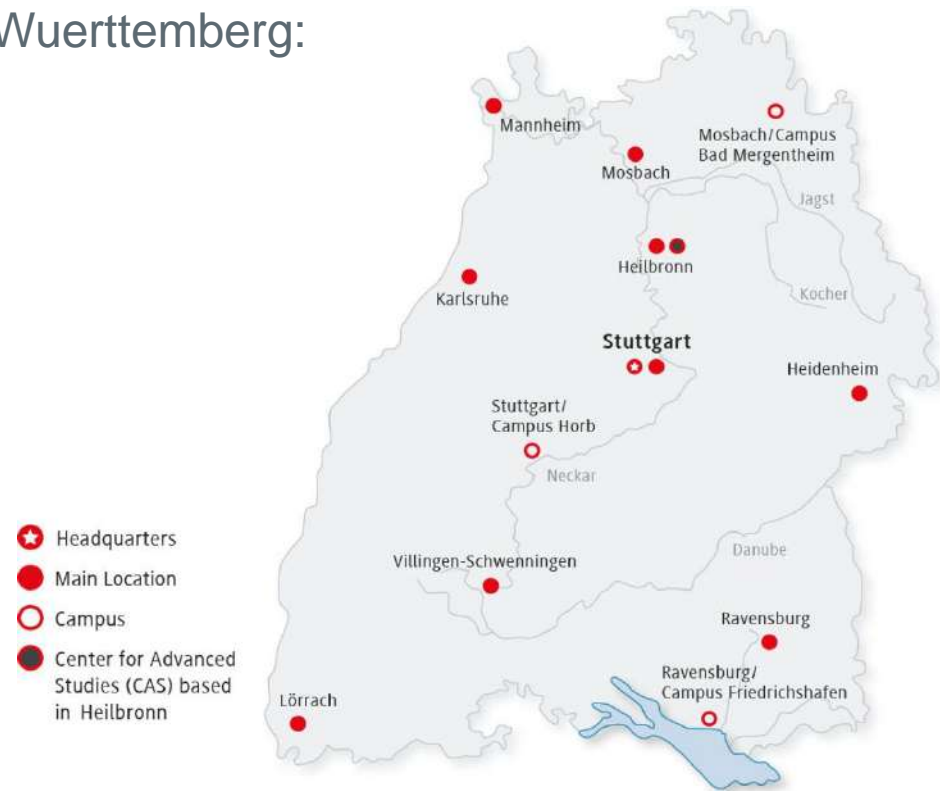


## 5. DHBW: Based on the US State University System

• DHBW counts as one of the largest higher education institutions in the German Federal State of Baden-Wuerttemberg:

- » 9 DHBW locations &
- » 3 DHBW campuses
  
- » approx. 34,000 students
- » over 9,000 corporate partners

• DHBW is the first German **higher education** institution offering degree programs with an **integrated on-the job training**



# DEGREE PROGRAMMES BUSINESS

DHBW School of Business	Heidenheim	Heilbronn	Karlsruhe	Lörrach	Mannheim	Mosbach	Mosbach/Bad Mergentheim	Ravensburg	Stuttgart	Villingen-Schwenningen
Accounting, Taxation and Business Law										
Accounting and Controlling					•				•	
Auditing									•	•
Business Taxation, Corporate Accounting and Finance						•				
Taxation and Auditing			•		•				•	•
Applied Health Sciences										
Applied Health Sciences **	•	•	•						•	
Applied Nursing Science										
Applied Nursing Science *									•	
Business Administration										
Banking	•	•	•	•	•	•	•	•	•	•
Business Development					•					
Commerce	•	•	•	•	•	•	•	•	•	•
Controlling and Consulting										•
Exhibition, Congress and Event Management					•			•		
Financial Services					•	•		•	•	
Food Management		•								
Healthcare Management					•	•	•	•	•	
Human Resource Management				•						
Industrial Management	•	•	•	•	•	•	•	•	•	•
Insurance and Risk Management	•	•	•		•				•	
International Business	•	•	•	•	•	•	•	•	•	•
Media and Communications								•		
Public Sector Administration					•					
Real Estate Management					•				•	
Service Management / Services Marketing	•	•			•				•	
Skilled Trades and Crafts									•	
Small and Medium Sized Enterprise										•
Technical Management									•	
Tourism and Hospitality Management				•				•		
Transport and Logistics	•		•	•						

DHBW School of Business	Heidenheim	Heilbronn	Karlsruhe	Lörrach	Mannheim	Mosbach	Mosbach/Bad Mergentheim	Ravensburg	Stuttgart	Villingen-Schwenningen
Business Information Systems										
Application Management					•	•	•			•
Business Engineering	•									•
International Management for Business and Information Technology						•				•
Sales and Consulting					•	•	•			•
Software Engineering					•	•	•			
Entrepreneurship										
Entrepreneurship			•							
International Business Management (trinational)										
International Business Management (trinational) ***					•					
Media										
Digital Media						•				
Media Design									•	
Online Media							•			
Physiotherapy										
Physiotherapy **						•				

# DEGREE PROGRAMMES ENGINEERING

DHBW School of Engineering	Heidenheim	Karlsruhe	Lörrach	Mannheim	Mosbach	Mosbach/ Bad Mergentheim	Ravensburg/ Friedrichshafen	Stuttgart	Stuttgart/ Horb
<b>Aerospace Engineering</b>									
Aerospace Electronics							•		
Aerospace Systems							•		
<b>Business Administration and Engineering</b>									
Chemical and Process Engineering	•			•					
Electrical Engineering			•	•			•	•	
Facility Management								•	
Innovation and Product Management	•					•		•	
International Technical Project Management	•				•				
International Technical Sales	•	•	•	•	•	•	•	•	•
Production and Logistics		•		•	•			•	•
<b>Computer Science</b>									
Applied Computer Science		•	•	•	•			•	•
Information Technology	•	•		•			•	•	•
IT Automotive								•	
Medical Informatics	•	•							
<b>Construction</b>									
Facade Engineering					•				
Project Management					•				
<b>Electrical Engineering</b>									
Automation		•	•	•	•		•	•	•
Communications Engineering		•					•	•	
Electrical Power Engineering				•					
Electronics			•	•			•	•	
Energy and Environmental Engineering				•			•		
Medical Engineering				•					
Vehicle Electronics						•			

DHBW School of Engineering	Heidenheim	Karlsruhe	Lörrach	Mannheim	Mosbach	Mosbach/ Bad Mergentheim	Ravensburg/ Friedrichshafen	Stuttgart	Stuttgart/ Horb
<b>Mechanical Engineering</b>									
Automotive Engineering							•	•	
Automotive Test Engineering									•
Design Engineering and Development	•	•	•	•	•		•	•	•
Polymer Engineering					•				•
Process Engineering				•					
Production Engineering	•	•	•	•			•	•	•
Supply and Energy Management				•					•
Virtual Engineering					•				
<b>Mechatronics</b>									
Automotive Systems Engineering								•	•
Electromobility				•	•				
General Mechatronics		•		•	•		•	•	
Power Industry				•					
Project Engineering				•					
Service Engineering				•					
<b>Mechatronics Trinational</b>									
Mechatronics Trinational ***			•						
<b>Medical Science and Technology</b>									
Medical Science and Technology	•								
<b>Paper Technology</b>									
General Paper Technology		•							
<b>Physician Assistant</b>									
Physician Assistant		•							
<b>Safety, Health and Environmental Engineering</b>									
Environmental Engineering		•							
Occupational Safety		•							
Radiation Protection		•							
<b>Wood Technology</b>									
Furniture and Interior Fitting					•				
Wood and Plastics Business Engineering					•				
Wood and Plastics Engineering					•				
Wood Construction and Construction Elements					•				

# DEGREE PROGRAMMES SOCIAL WORK STUDIES

DHBW  
School of Social Work

	Heidenheim	Stuttgart	Villingen-Schwenningen
<b>Interprofessional Healthcare</b>			
Interprofessional Healthcare **	•		
<b>Social Work</b>			
Child and Youth Care	•	•	
Education and Profession			•
Forensic Social Work		•	
Networking and Community Welfare			•
Social Management	•		
Social Work and Disability Studies			•
Social Work and Healthcare Case Management	•		
Social Work: Early Years and Primary Education		•	
Social Work in Healthcare		•	•
Social Work: Long-Term Care and Rehabilitation		•	
Social Work: Mental Health and Addiction			•
Social Work with the Elderly and Civic Commitment	•		
Work, Integration and Social Security		•	
Youth, Family and Social Welfare Services	•	•	•
Youth Work		•	
<b>Social Economy</b>			
Social Economy			•

\* study programme with on the job training, begin of studies in April

\*\* study programme combined with apprenticeship

\*\*\* programme duration: 7 semesters

▲ Please note that only these programmes are entirely taught in English

**bold:** field of study  
normal: course of study





## THE DUAL MASTER AT THE CAS (CENTER FOR ADVANCED STUDIES)

The DHBW master programme promotes career building for graduates

Conditions: 1 year working experience + graduation degree with 210 Credit points

DHBW Master programmes are work-integrated and feebased

Graduation degrees:

- Master of Arts (M. A.)
- Master of Engineering (M. Eng.)
- Master of Science (M. Sc.)



# MASTER-DEGREE PROGRAMMES AT DHBW

## *Business*

### •Master in Business Management

- Accounting, controlling and taxation
- Services
- Finance
- General business management
- International business
- Marketing
- Media and marketing
- Personnel and organization
- Supply chain management, logistics and production

### •Taxation, Accounting and Auditing (M.A.)

## *Engineering*

### •Bio-Fiber Technology (M.Eng.)

### •Electrical Engineering (M.Eng.)

### •Computer Science (M.Sc.)

### •Integrated Engineering (M.Eng.)

### •Mechanical Engineering (M.Eng.)

### •Industrial Engineering (M.Sc.)

## *Social Work*

### •Governance of Social Work (M.A.)

# Cooperations Worldwide



# 5. DHBW – Dual Model

## Advantages & Benefits

---

## Benefits of the DHBW Model: - for National Policy Maker

- **Short study period (3 years)**
- **Extremely low drop-out rate: approx. 90 % of the students successfully complete their studies**
- **Graduates enjoy high employability upon graduation (approx. 85 - 95 %)**



## **Advantages of the DHBW Model: - in Teaching (External Lecturers Perspective)**

- **Work together with high-potential young people and future executives**
  - **Get a brief insight into the student's academic learning and training and the institution**
  - **Expand one's own professional network**
  - **Possibilities for cooperative research:**
    - **Joint projects with students**
    - **Supervision (Bachelor Thesis and student research projects)**
-



## **Advantages of the DHBW Model: - for Students**

- **Excellent opportunity to reality-test one's career**
- **Close supervision due to small classes**
- **Financial independence from the first semester onwards**
- **Faculty comprising both academic teaching staff and industry experts**
- **Excellent prospects on the labor market due to the valuable work experience**



## Advantages of the DHBW Model: - for Partner Companies and Social Institutions

- Admission process: co-op students are selected by the corporate partners
- Industry-related studies for future executives and field experts
- Early talent retention
- Corporate socialization of the young generation of qualified employees
- Excellent performance of cooperative students

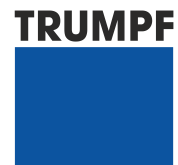




# RENOWNED CORPORATE PARTNERS



WITTENSTEIN



**Thank you for your attention!**

Prof. Dr. Valentin Weislämle  
Prof. Dr. Wendy Fehlner

---